

EMIKO IPC





Who we are?

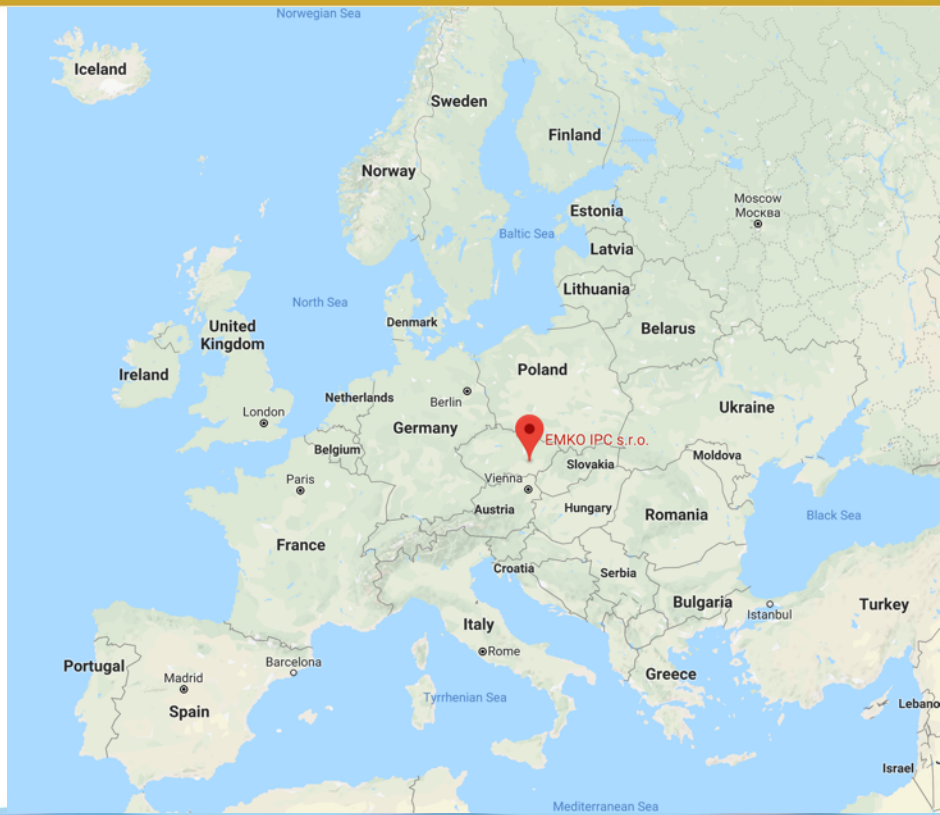
- Czech **industrial PC integrator** and distributor
- Partner company of **EMKO Case** - company with more than 20 years of experiences on customized housings and cases market
- **Flexible** supply chain partner for you to grow
- We provide “**one stop shopping**” to save your time





Strategic location
in the middle of EU

Brno
Czech republic





Our business fields

- „FAST“ service in
 - System integration – assembly line in Brno, Czech republic
 - Custom design service
- Industrial components supply chain partner
 - Local stock to support immediate components demand
 - Medical certified products
 - Financial management - provide payment terms to reduce your cashflow issue against Far East suppliers





Assembly line and HQ in Czech republic





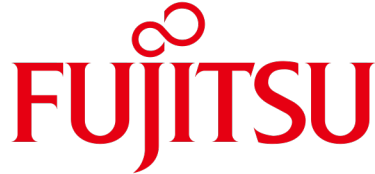
How we work

1. Listen to customer's needs
2. Understand the request / inquiry
3. Provide solution
4. Lending samples / Pilot run
5. Flexibility on massproduction (MOQ 20pcs)





Key technology partners





- Custom made chassis (MOQ 20pcs only)
- Standard chassis for mainboards:
 - RaspberryPi / Tinkerboard
 - 3,5"
 - Intel NUC
 - mini STX
 - mini ITX
 - microATX
 - ATX
- 1U/ 2U/ 4U 19" rack chassis
- Tablet chasis





EMKO[®]
CASE





FUJITSU

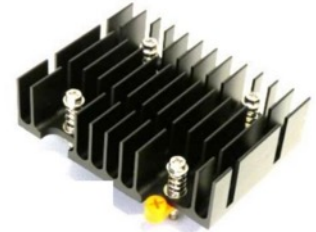
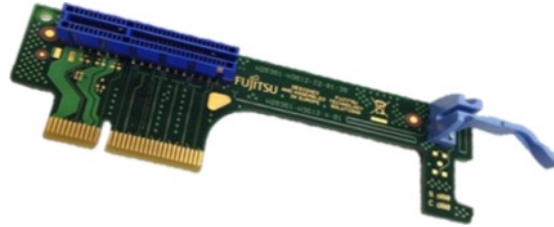
ASUS

- Industrial mainboards
 - 3.5"
 - mini-STX, mini-ITX
 - microATX, ATX
 - Chassis Kit Solutions – SMARTCASE™
- **Fujitsu** - Quality made in **Germany**, local support
- **ASUS** – World **Top1** Motherboard Manufacturer
- Long-term **availability** – 60 to 72 months
- Designed for **24/7** and **wide temperature** operation
- High Quality production
 - 96% automatic production
 - No partial soldering
 - 3-Level testing after production (optical, electrical, functional)





- Accesories and add-on boards
 - CPU coolers
 - RS-232/482/485 connectors
 - VGA / DVI adapters
 - Riser cards





- SSD storage products
 - 2,5"
 - CFast
 - CF card
 - SD card / microSD card
 - M.2 SATA / mSATA
- **No. 2** in global SSD market share
- Wide temperature products
- Fixed roadmap
- PCN / ECN updates
- Industrial lifecycle
- Fixed BOM





- DRAM products
 - DDR3
 - SODIMM
 - UDIMM
 - DDR4
 - SODIMM
 - UDIMM
- **No. 2** rank module manufacturer (DRAMexchange)
- Wide temperature products
- Fixed roadmap
- PCN / ECN updates
- Industrial lifecycle
- Fixed BOM





THE BEST PARTNER OF DISPLAY / MONITOR

AUO TFT DISPLAY

- displays from a minimum of 4.3 “to 85”
- Options in design, viewing angle, brightness, slim or standard size, TN, MVA or IPS, outdoor or indoor

VALUE-ADDED DISPLAYS

- Sun light readable LCD with high brightness and attach with AG/AR film to avoid reflection
- touch solutions combine with different lamination (Air bonding or Optical bonding)

CUSTOMIZED DISPLAYS

- ACMEPOINT has technical and project management team to estimate customized product as resizing TFT-LCD Display, Touch LCD module, customized backlight module etc.





- Powersupplies AC/DC
 - ATX, FlexATX
 - 1U / 2U
 - External adapters
 - Openframe
 - Redundant
 - Server
 - DIN rail
 - Medical certified
- Powersupplies DC/DC
- Wide temperature products
- Fixed roadmap
- Industrial lifecycle





Get in touch with us with your inquiry

www.emkoipc.com

info@emkoipc.com

+420 515 917 670

EMKO IPC s.r.o., Řípská 11f, Brno, 62700 Czech republic

