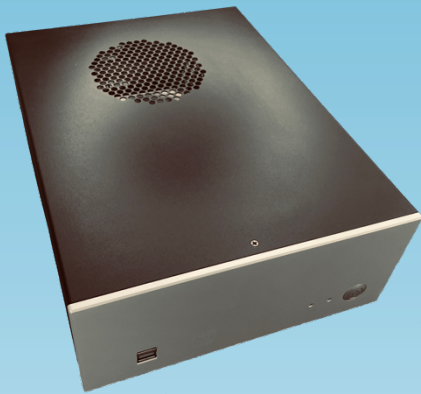




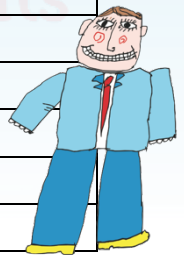
## EM-I-K3833

Barebone / Solution



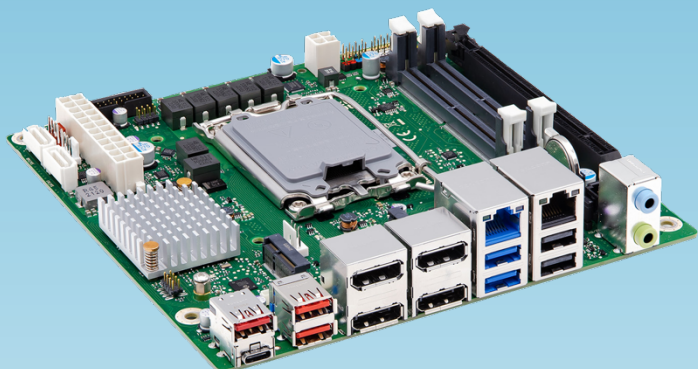
### SPECIFICATION

|                                   |  |
|-----------------------------------|--|
| Chassis                           | Dimension (W x L x H): 231 x 305 x 96 mm |
|                                   | Colour: Black / on request (min. 20 pcs) |
|                                   | Material: galvanized steel /aluminium    |
| Drive bays and internal positions | 1x 2,5" SSD                              |
|                                   | MB: 170 x 170 mm, mini ITX Kontron K3833 |
| Front panel                       | Power button with LED backlight          |
|                                   | 2 x USB 3.0                              |
| Rear panel                        | 4x Displayport, 2x LAN port              |
|                                   | USB-c, 5x USB 3.2, 2x USB 2.0            |
|                                   | 24 pin ATX connector                     |
| Mounting options                  | Other customization: from 20 pcs         |
|                                   |  |
|                                   |  |

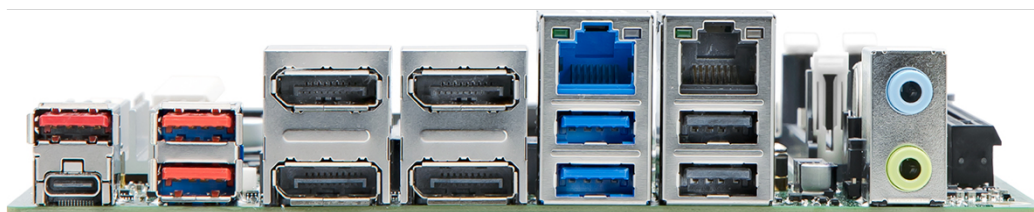


ALL PRODUCT SPECIFICATIONS ARE SUBJECT TO CHANGE WITHOUT NOTICE.





|                  |   |
|------------------|---|
| Supported Memory | DDR5, up to 64 GB   |
| CPU options      | Intel® Core™ i9/i7/i5/i3 (12th/13th Gen) processor series |
|                  | Intel® Pentium®/Intel® Celeron® processor series          |
|                  | Socket LGA1700, max 65W TDP                               |
|                  | Chipset Q670E   |
| I/O Interface    | 4x Displayport, 2x LAN port                               |
|                  | USB-c, 5x USB 3.2, 2x USB 2.0                             |
|                  | 2x SATA III RAID, 1x COM port optional                    |
|                  | M.2 2230 Key-E, M.2 2242 Key-M, PCIe x16 Gen5             |
|                  |   |
|                  |   |
| Product features | ATX 24 pin + 4 pin for CPU                                |
|                  | HW Watchdog, System Guard / cTDP                          |



ALL PRODUCT SPECIFICATIONS ARE SUBJECT TO CHANGE WITHOUT NOTICE.

