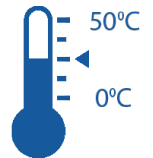
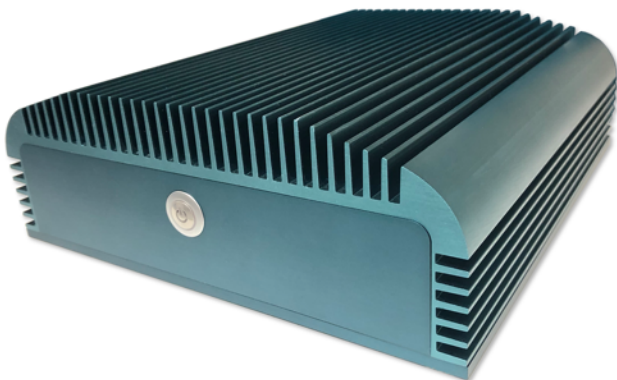


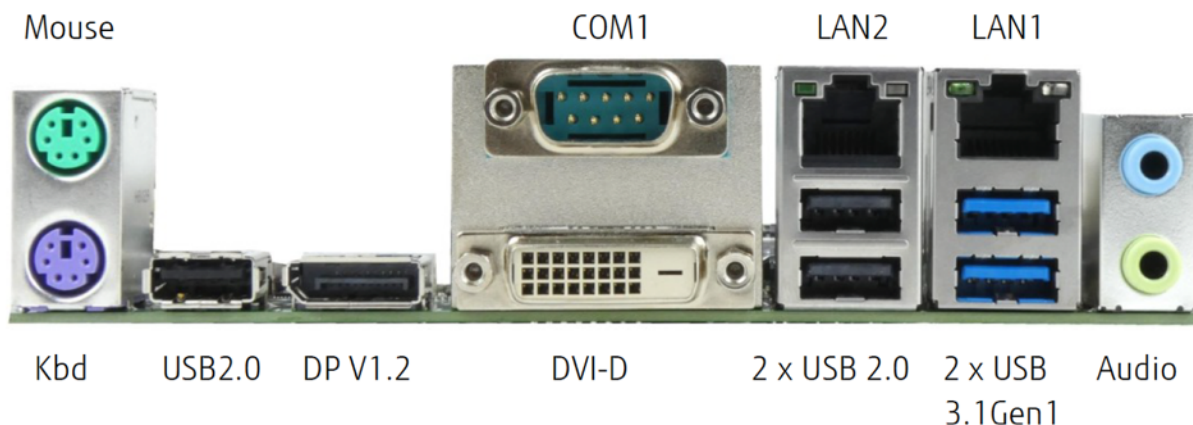
EM-IND-I34

Fanless Industrial Small Form Factor PC



Specification

Chassis	Dimensions (W x L x H): 219 x 230 x 90 mm
	Colour: silver / black / on request (min. 20 pcs)
	Material: anodized aluminium, IP50 protected
	4x rubber feet
	Weight netto: TBD
Drive bays internal positions	2x 2.5" HDD, 1x m.2 2280 SSD
	MB: 170 x 170mm, mini-ITX form factor (Kontron D3634-S)
	Integrated I/O shield
Front panel	Power button with LED backlight
	Optional: 2x USB 2.0, 2x USB 3.1 Gen1, 1x RS232/485/422
Rear panel	1x DisplayPort V1.2, 1x DVI-D, 1x RS232
	2x GLAN, 3x USB 2.0, 2x USB 3.1 Gen1, 2x PS/2
	DC-In connector 12V, Audio (Line in/out)
Mounting options	Wall mount (pair)
	VESA holder
	DIN clip kit
	other customization: (min. 20 pcs)

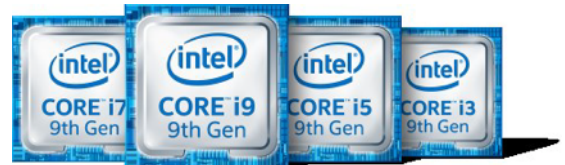
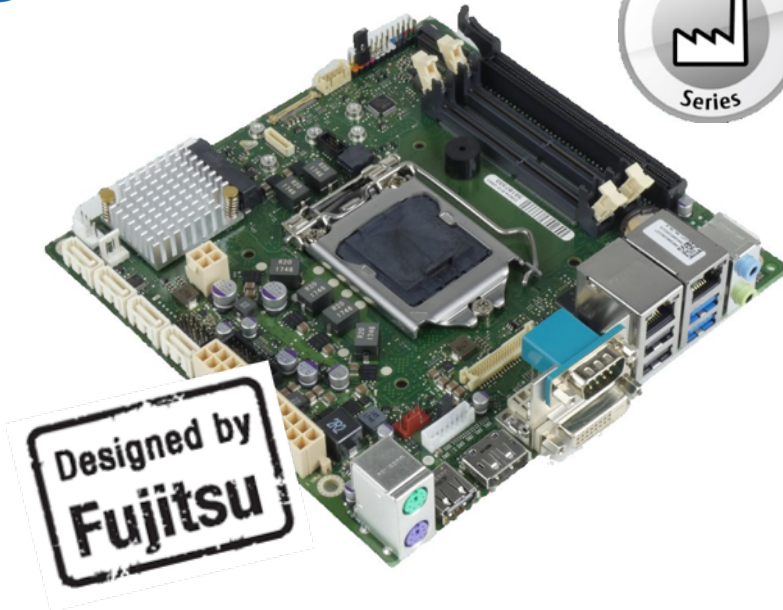


All product specifications are subject to change without notice.



Mainboard

D3634-S mini-ITX



Designed and approved for 24/7 continuous operation @ 0-60°C

Supported Memory	2x DDR4 2666/2400 SDRAM (SO-DIMM), up to 32GB
CPU options	Intel® Core™ i7 / i5 / i3 – (8 th gen.) processor series Intel® Core™ i9 / i7 / i5 / i3 (9 th gen.) processor series
	Intel® Pentium® / Intel® Celeron® processor series
I/O Interface	Intel® H310 Express Chipset, Socket LGA1151 – limited to 35W TDP
	Intel® UHD Graphics (depends on installed processor), DX12
	2x DisplayPort V1.2, 1x DVI-D
	Audio: Line in / Line out, Realtek ALC671 HDAC
	5x USB 2.0 (2x opt.), 4x USB 3.1 Gen1 (2x opt.) 1x COM1 (RS232), 1x COM2 (RS-232/422/485 option), 2x PS/2
	4x SATA III - 6Gbs
	M.2 SSD 2280 (supports 2280/2260/2242, Key-M, PCIe/NVME)
Product features	Mini PCIe module (full size with M.2 2242 only), PCI Express x16 Gen3
	2x GbE LAN onboard (Intel i219LM & i210AT)
	External DC Input (12V, max. 19A)
	System Guard / cTDP
	Wake-on-LAN (WoL)
	HW Watchdog / Intel® TPM V2.0 onboard



All product specifications are subject to change without notice.